

Wild Earth Africa 3D Scavenger Hunt



Wild Earth Africa 3D

Now that you've experienced "Wild Earth Africa" in 3D, list some animals you saw in the movie.

_____	_____	_____
_____	_____	_____
_____	_____	_____
_____	_____	_____

Now it is time to visit some of these animals that live in the Saint Louis Zoo. You can see them up close and learn more about what conservation steps the Saint Louis Zoo is taking to help animals in the wild. Your adventure will begin in River's Edge. The entrance to this area of the Zoo is by the South Entrance "River's Edge" Railroad Station.

As you work your way through the River's Edge, look at the animal tracks on the ground. Your first stop will be the cheetahs – look for the Cheetah Conservation Center sign!

Cheetah Conservation

Start at the Cheetah Conservation Center sign. It will be along the trail to the left immediately before you reach the cheetah habitat. Read the sign and check out our cheetahs to see if you can figure out your cheetah conservation scenario below!

“Wait, you’ve seen these cats before! You remember seeing them roaming around your family’s farm in your village in the country of Namibia. Your family, like many families in Africa, raises sheep and goats for food and milk. You know cheetahs eat other animals and are very fast. Your father has said he will try to kill the cheetahs if they get too close to the animals. He thinks that because your farm animals are fenced in, the cheetahs would prefer to eat them. Lately, you’ve noticed large vans and people nearby with GPS equipment and radios. They say they are from the Saint Louis Zoo in the United States and they are looking for cheetahs to study because there aren’t a lot of cheetahs left in your country. You are surprised and tell the people from the Saint Louis Zoo that your dad does not want cheetahs around. They inform you that the cheetahs are actually good to have around and need your help to survive! Is there a way to keep the cheetahs away from your farm without killing them?”

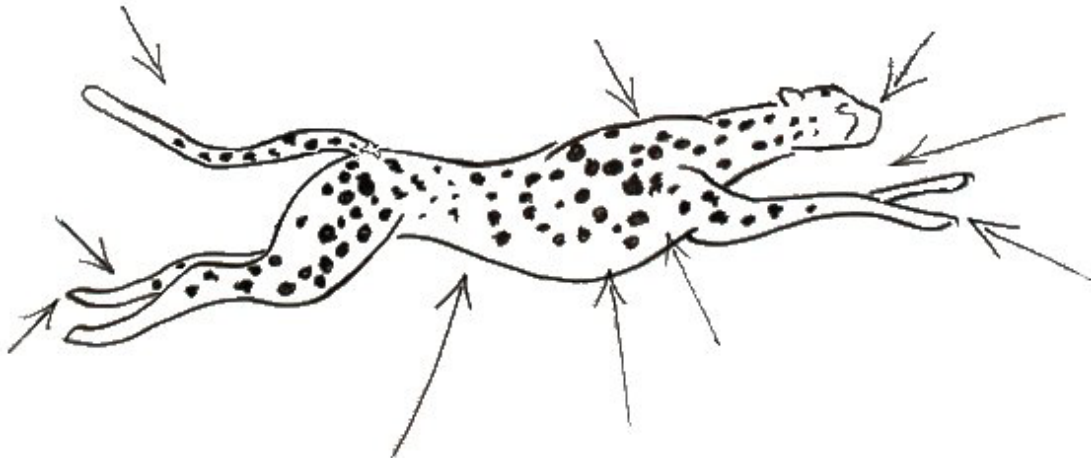
For more ideas and ways the Saint Louis Zoo and the people of Africa are helping cheetahs, head next to the School House located on the right side of the trail, across from the dwarf mongoose and cheetah. While you are there, you can complete the African School House Activity.



African School House Activity

Cheetah Tagging

Cheetahs are known for their speed, so relocating or ear tagging one will be very difficult unless they are put under anesthesia. Look at the yellow signs to learn the steps for relocating and ear tagging a cheetah. Then use the blackboard to label the adaptations that make cheetahs so fast and draw in an ear tag on your cheetah.



Microscope Lab

During the show you got to see many of the animals from Africa. Scientists in Africa spend hours in the field examining different animals and pieces of their bodies. Now we are going to see a few pieces of some of these animals up close using a microscope. Use the microscope table to look at the biofacts. Then draw what you see for the following animals.

--	--	--

Shavings from the horn
of a Black Rhino

Hide Sample from a
Grevy's Zebra

Hide Sample from a
Warthog

Before you leave River's Edge, check out some other cool African Animals:

Black Rhinoceros, Red River Hogs, Bat-eared Foxes, Carmine Bee Eaters, Hippopotamus, Spotted Hyenas and Dwarf Mongoose.

Once you exit River's Edge, you are on safari looking for the African Lion! They can be found in the Red Rocks area, at the top of Historic Hill. Visit Big Cat Country and use the graphics located between the Amur leopard and the African lion to complete your food chain and answer the question below.

Food Web Activity

Ecosystems in which animals live are an intricate web of energy and life. All energy for all living organisms starts with the sun. Plants, through a process known as photosynthesis, are able to capture the energy from the sun. Many different types of animals called herbivores then eat the plants. Animals classified as carnivores then prey upon the herbivores. You saw an example of this in the movie, in which a lion (the carnivore) was eating a zebra (the herbivore).

Within this energy process, there is an energy loss. Therefore, a balanced ecosystem has more plants than herbivores, and more herbivores than carnivores. In an ecosystem, each part of the process depends on the others. If one level becomes unbalanced, it affects all the other levels.

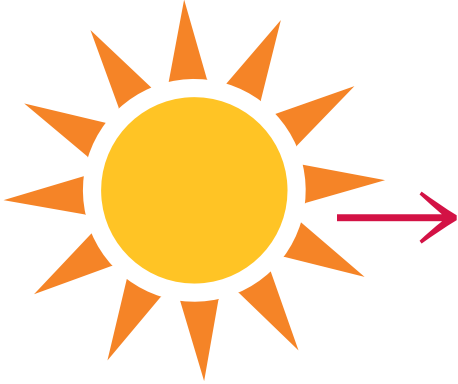
sun → plants → herbivore → carnivore → scavenger → decomposer → soil → nutrients → plants



1. Create your own food chain below. You must include an African large cat at the top the food chain.

Create your own Food Chain

Write the name or draw a picture in the boxes below.



Producer

Herbivore



Carnivore



2. List at least two reasons why large carnivores are important to an ecosystem.

After you've completed your food chain, it is time to visit the Grevy's zebras! Continue past Big Cat Country to the zebra yard and find the Grezy's Zebra Conservation Sign.

Zebra Conservation

Now check out the Grevy's Zebra conservation information sign. Once you've read the sign, check out the zebras and see if you can figure out your zebra conservation scenario below!

“Your friend and her family raise cattle and crops along with several other families in their village in Kenya. To make sure their cattle and their crops have enough water, they use a lot of the water from the nearest watering hole. One day people from the Saint Louis Zoo in the United States approached their village and started teaching everyone about the Grevy's Zebra that live near you and that they need her help. It seems that not enough water is left in the watering hole when her village is done using it and the Grevy's Zebra are having trouble surviving! She can see the beautiful Grevy's Zebra every now and then and she really likes having them around but her family needs the water too. Now that you've been able to help the Saint Louis Zoo save the cheetahs, can you also help the Saint Louis Zoo and your friend save the Grevy's Zebra? What are some things that your friend and her village can do so they AND the Grevy's Zebra have enough water?”



Now that you have helped save yet another important African species, head over to the giraffes and experience what it is like to be a researcher for the Saint Louis Zoo!

Giraffe ID Activity

You are a researcher who has been studying the reticulated giraffes. Recently though, you've noticed that their GPS signals are no longer moving, so you head out to figure out what is going on. Once you find the herd, you realize that none of them have their GPS trackers on. That is a mystery in itself, but the bigger dilemma is...how do you tell the giraffes apart? Using the clues below, match the correct giraffe to its description.

▷ **Dexter**

- large male
- darkest color of all of the giraffes
- has large, bony 'bumps' on his head

▷ **Jessie**

- darkest female giraffe
- has a solid, dark red mane

▷ **Suzie**

- lightest female giraffe
- has a blond mane

▷ **Sukari**

- has an upside down 'heart' on her right chest

▷ **Jumo**

- Smallest male

▷ **Solstice**

- Smallest giraffe



Before you leave Red Rocks, check out these other neat African Animals:

Ostrich, Warthogs, Okapi, Soemmering's Gazelles, Gerenuk, Lesser Kudu, Addax, Somali Wild Asses, Bongo, Cuvier's Gazelle, East African Crowned Crane, Mhorr's Gazelle, Saddlebill Stork, and Steenbok.

Congratulations on completing the Wild Earth Africa 3D Scavenger Hunt!

To learn more about what the Saint Louis Zoo is doing to help endangered species in the wild, check out www.stlzoo.org.